



FY2015

International Joint Research Program to Address Neglected
Tropical Diseases (NTDs) in Africa
Application Guidelines
(Excerpts)

Provisional Translation

July 2015

国立研究開発法人 日本医療研究開発機構

国際事業部 国際連携研究課

Japan Agency for Medical Research and Development

Department of International Affairs
Division of International Collaboration

Table of Contents

I. INTRODUCTION 2

1. BACKGROUND..... 2

2. OBJECTIVE..... 3

3. SUMMARY 4

4. IMPLEMENTATION STRUCTURE..... 5

II. PUBLIC INVITATION TO APPLY FOR THE PROGRAM..... 6

1. PROJECTS ELIGIBLE FOR THE PROGRAM..... 6

2. APPLICATION SUBMISSION PERIOD..... 7

3. REQUIREMENTS FOR APPLICATION..... 8

4. SCREENING METHOD..... 8

5. SCREEING CRITERIA (PRE-EVALUATION ITEMS)..... 9

6. OTHERS..... 9

**IV. HOW TO COMPLETE AND SUBMIT THE RESEARCH AND DEVELOPMENT
PROPOSAL..... 10**

1. SCHEDULE FROM APPLICATION SUBMISSION TO PROJECT LAUNCH..... 10

2. PREPARATION OF FORMS FOR A RESEARCH AND DEVELOPMENT PROPOSAL..... 11

5. EXAMPLES OF HOW TO COMPLETE THE RESEARCH AND DEVELOPMENT PROPOSAL FORMS..... 12

VIII. Q&A 25

I. Introduction

According to the Act on Promotion of Healthcare Policy and the Act on the Independent Administrative Agency of Japan Medical Research and Development, which were enacted in May 2014, a “control tower” function for research and development in the medical sector was created within the Cabinet and it was decided that budgets for research and development in the medical sector that had been allocated to the Ministry of Education, Cultural, Sports, Science and Technology, the Ministry of Health, Labour and Welfare and the Ministry of Economy, Trade and Industry would be consolidated into the Japan Agency for Medical Research and Development (AMED).

AMED was established on April 1, 2015 to provide consistent support from basic research to practical application and to establish a system to promote the development of innovative drugs and medical devices in Japan.

1. Background

To ensure sustainable socio-economic growth and development in Japan and around the world and to allow Japan to maintain a solid position and trust in the world, it is important to flexibly embrace the positive aspects of African and other emerging nations that have witnessed remarkable growth in recent years and to promote diplomacy through science and technology. The purpose is to build mutually beneficial relationships for the future based on the potential of Japanese science and technology in order to encourage cooperation and innovation. These efforts will help Japan to improve its science and technology standards and contribute to the development of the economy, and society and to improve the welfare of the Japanese people.

Emerging and developing nations in Africa are experiencing rapid growth. However, many people in African countries are suffering from infections called “neglected tropical diseases” (NTDs), which show similar symptoms. NTD patients remain undiagnosed and untreated because there are no systematic diagnostic and treatment methods available. NTDs are prevalent in 149 countries around the world and the number of NTD patients has reached 1.4 billion, nearly half of whom have been reported in Africa. Thus, NTDs are particularly rampant in Africa.

The underlying cause of most NTDs is poor sanitation resulting from poverty. NTDs can be fatal and also result in severe physical disabilities, such as blindness, walking difficulties, and skin lesions. The stigma of these disabilities poses a significant barrier to economic activity and social life, resulting in a decrease in labor and productivity and making it harder to escape from poverty. WHO regards NTDs as tropical diseases that must be controlled by humankind and urges the world to take urgent actions to address them.

(Reference) http://www.who.int/neglected_diseases/en/

http://whqlibdoc.who.int/hq/2012/WHO_HTM_NTD_2012.1_eng.pdf?ua=1

http://www.who.int/neglected_diseases/diseases/en/

NTDs pose a particular threat in African countries where these dreadful diseases are rampant. Thus, there is an urgent need for research and development in these countries to address NTDs and cooperation for training specialists.

The Leaders’ Declaration agreed at the G7 Elmau Summit held on June 7 and 8 in Germany includes their commitment to preventing and controlling NTDs to achieve the goal of controlling and eliminating NTDs by 2020.

(Reference) <http://www.mofa.go.jp/files/000084020.pdf>

The Japanese government’s efforts to support Africa include educational activities to control NTDs by

incorporating relevant issues into school health programs in Africa based on the Hashimoto Initiative proposed by the then Prime Minister Ryutaro Hashimoto in 1998, and the Hideyo Noguchi Africa Prize, which honors individuals and groups who have contributed to healthcare in Africa.

The government also implements the African Business Education Initiative for Youth (ABE Initiative) proposed at the Fifth Tokyo International Conference on African Development (TICAD V) held in Yokohama in June 2013, which offers opportunities to young African men and women to receive training and education.

Under these circumstances, Prime Minister Abe, on behalf of the Japanese government, proposed the launch of a new international joint research focusing on neglected tropical diseases (NTDs) at the 4th Annual Meeting of the Global Research Council in 2015 held for the purpose of addressing issues common to science promotion institutions around the world.

(Reference) <http://www.jsps.go.jp/information/index4.html#20150529>

http://www.jsps.go.jp/j-grc/message_souridaijin.html

In this context, international joint research for addressing NTDs in Africa will be launched to establish preventive, diagnostic, drug discovery, and treatment methods and to develop outstanding young African researchers. More specifically, an international joint research program founded on the research results and technological developments made by Japanese researchers will be launched, based on the principle of reciprocity, using a “reserve fund in the budget for research and development in the medical field.” This reserve fund will be used to accelerate the progress of research that is expected to produce outstanding results and to expand these results. The objective of this program is to enhance the contribution of Japan, using its science and technology capabilities, to addressing NTDs, which are serious impediments to the development of African countries that need to be addressed urgently, through strengthening the development of science and technology and human resources both in Japan and African emerging and developing nations. These efforts will boost the Japanese government’s efforts to address infections, for example, to ensure the safety of travelers and deal with imported infectious diseases, as well as promote international contribution and diplomacy through science and technology.

2. Objective

To control NTDs, long-term joint research and activities through close cooperation with African researchers, research institutes, government agencies and other organizations are needed. To facilitate continuous cooperation, we will establish local research centers jointly with universities and research institutes in African countries to conduct international joint research and contribute to innovation, including human resources development, using the potential of Japanese science and technology activities and by initiatives originating from Japan. These centers are expected to serve as bases for joint activities through close cooperation to help enhance the capabilities of African countries.

With the aim of conducting research and development specifically beneficial to African society, this program will be implemented at universities and other research institutes both in Japan and African countries to achieve the goal of controlling NTDs. The program covers research and development in the medical and public hygiene fields, including from basic research to the establishment of methods for diagnosis, surveillance, prevention, drug discovery and treatment. It also includes research on proposing policies and operations, such as a public-hygiene system to control NTDs, based on the results of the aforementioned research and development. During these activities, through close

cooperation at local sites, centers for international joint research and cooperative activities will be established to help local researchers continue and extend their efforts over a long period. These centers are also expected to provide training and education to prospective young African researchers with the aim of contributing to innovation in Africa.

Goals of the five-year program

The goals expected during the five years include establishing a local system as the foundation, reaching a stage where it is possible to predict how the results of joint research can be of use to society, in other words, where a specific route towards sharing the benefits from the research with society at large can be predicted, or reaching a higher step, and also contributing to the development of young researchers.

Development expected after the program period

It is expected that, based on the process and results of the program, awareness of the necessity of cooperation among African countries and international organizations will be raised in together with participating institutions in partner countries in order to promote the continuation of the cooperative system to address NTDs, in other words, the continuation of cooperation with the local center. It is also expected to help develop and expand the program, including actual implementation in social settings after completing the program. (continuity, possibilities)

3. Summary

This program aims to develop preventive, diagnostic, drug discovery, and treatment methods for NTDs at universities and other research institutes in Japan and African countries and to implement the developed methods in actual social settings as well as to train young African researchers through joint research.

To conduct research and development specifically beneficial to African society in terms of controlling NTDs, the core concept should be designed in such a way as to meet the needs and conditions in partner countries/regions through cooperation that takes into account local characteristics, based on the potential of Japanese science and technology and through Japanese initiatives. Based on such a core concept, in this program, joint activities and educational activities will be implemented, and a system to facilitate close cooperation with local researchers and research institutes or government agencies will be established. In conducting surveys and other research, testing methods that meet international standards will be used. Participants in this program are expected to conduct high-quality international joint research with the standardization of results in mind so as to contribute to African society.

One of the possible goals is to establish a monitoring system, which is important in Africa as the actual prevalence of NTDs is not fully understood. If experimental surveys are conducted in multiple countries based on core technology, if survey results are widely shared among countries, and if an extensive monitoring network infrastructure is established through the Japanese initiative, all these efforts would contribute significantly to addressing NTDs. It is also expected that this system would then be implemented in actual social settings in many countries through support and cooperation from various countries and international organizations, and through application and sophistication in extensive areas.

The following approaches to addressing severe NTDs can be greatly improved through systematization and dissemination: 1) implementation and verification of wide-area surveys by establishing a method for rapid definitive

diagnosis and spreading the diagnostic method, 2) prevention of secondary infection in cooperation with clinics and other healthcare providers, 3) development of preventive measures by identifying infection routes and other efforts and 4) proposals on public hygienic systems, policies and operations. A further aim is to discover seed viruses for vaccine candidates and seeds for drug candidates based on analyses of clinically isolated strains obtained during the survey.

These efforts are also expected to contribute to monitoring the possibility of emerging infections derived from NTDs.

The outcomes from these efforts are expected to be further developed in order to share the benefits with society at large, including actual implementation in social settings and practical application. To meet this expectation, it is important to establish a system to facilitate full cooperation with governmental agencies of the partner country and relevant organizations and to raise awareness of the importance of cooperation among African countries and international organizations. To enable the continuous and positive development of such efforts, it is particularly important to gain support from the local side. For this reason, in promoting efforts, it is necessary to carefully plan awareness raising and educational activities, such as workshops, in order to increase recognition of their outcomes and to spread them.

It is also important to encourage cooperation and coordination among efforts in order to improve the efficiency of efforts and increase the effectiveness of sharing their outcomes with society at large. In this context, we will hold a joint meeting at least once a year. Close cooperation among efforts is expected to play a significant role in improving the presence of Japan in Africa. It is also expected that cooperation will be extended to include other systems that are implemented in Africa, wherever possible.

4. Implementation structure

(1) Program supervisor, program officer

This is one of the programs that comprise the International Collaborative Research Program. The Program Supervisor (PS) who is responsible for coordinating project operation and cooperation among programs and the Program Officer (PO) who is responsible for operation, management and administrative support in cooperation with PS will be assigned to ensure smooth management overall, with the aim of achieving efficient and effective management and maximizing outcomes from research and development.

The PO participates in meetings discussing project-related issues and conducts onsite surveys to grasp the progress of each project.

(2) Evaluation (pre-evaluation, interim evaluation, post-evaluation)

The selection of research and development projects (pre-evaluation) and evaluation of selected research and development projects (interim evaluation, post-evaluation) are conducted by the Project Evaluation Committee established within AMED.

II. Public invitation to apply for the program

1. Projects eligible for the program

Eligible projects are those involving international joint research together with research institutes in African countries in order to contribute to innovation, including human resources development, using the potential of Japanese science and technology activities and by initiatives originating from Japan through cooperation with a local center to help enhance the capabilities of African countries, are shown below.

Research contents

(1) alone, or (1) and (2) combined, as shown below:

- (1) An individual research project on methods for diagnosis, surveillance, prevention, drug discovery and treatment to address NTDs, or a series of research studies on topics ranging from basic to practical applied research, or research in the medical and public hygiene fields aiming at practical application of research outcomes and sharing of these outcomes with society at large
- (2) Research on proposing policies and operations, such as a public-hygiene system to control NTDs

A project must include the development of human resources needed to conduct joint research at a local site, and a training program in which young African researchers are invited to Japan to participate in international joint research for a certain period of time.

Target diseases

Seventeen infectious diseases* designated by the World Health Organization as neglected tropical diseases (NTDs), which must be controlled by humankind.

A proposal may target either a single NTD or multiple NTDs.

* Lymphatic filariasis, Chagas disease, leishmaniasis, dracunculiasis (guinea-worm disease), human African trypanosomiasis (sleeping sickness), trachoma causing blindness, leprosy (Hansen's disease), schistosomiasis, onchocerciasis (river blindness), soil-transmitted helminthiasis, Buruli ulcer, dengue, cysticercosis, rabies, echinococcosis, foodborne trematodiasis, yaws

Implementation structure

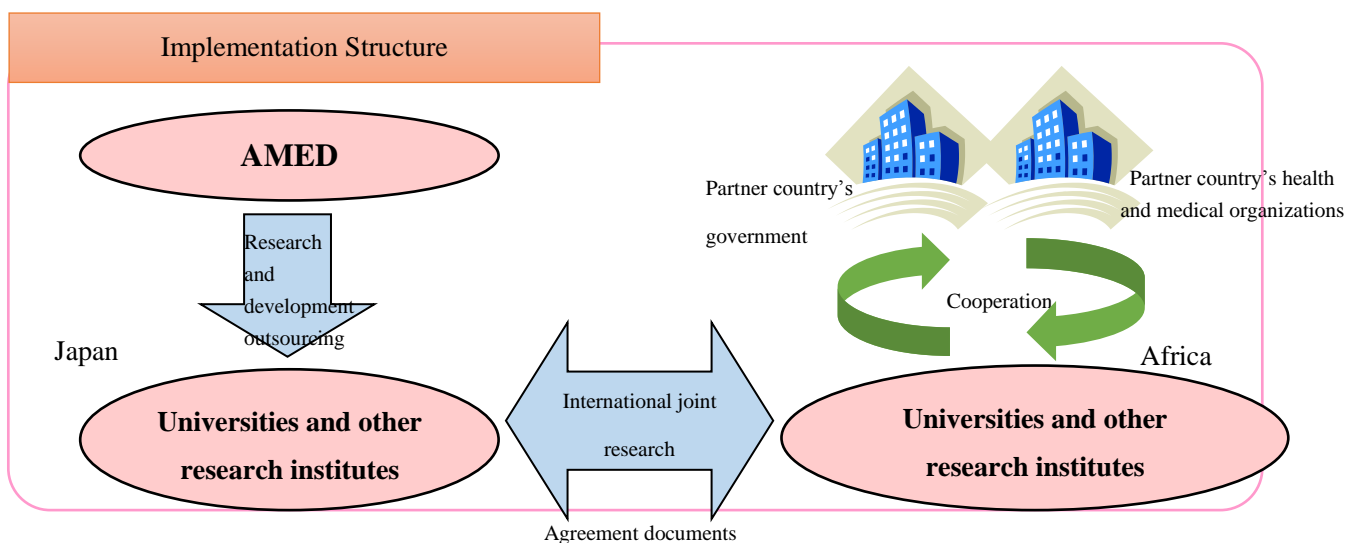
Designate an institution in Japan that will supervise overall research activities and operation and be responsible for the entire project as the "representative institution." Designate a person who belongs to the representative institution and will be responsible for overall cooperative efforts at the center as the "R&D representative." In addition, if necessary, designate an institution in Japan other than the representative institution as the "Japanese participating institution." The R&D representative must intend to continue his/her cooperation with the center after the completion of the support provided by this program and have the ability to coordinate efforts to set up the center together with research institutes in Japan and the cooperating country to form the center and international organizations. Designate institutions in African countries that will participate in the international joint research as "foreign participating institutions." One of the foreign participating institutions must be designated as the "foreign representative institution," which will be responsible for coordinating the foreign participating institutions. If there is any institution

in Japan that will cooperate in the international joint research but not receive any allocated research and development funds, designate the institution as a “cooperating institution.”

Foreign participating institutions must have the capabilities necessary for conducting joint research with Japan and must bear an appropriate share of the costs of participating in the project. Their contribution may include the provision of either of the following research resources: research expenses, human resources, fields, samples and facilities.

It is desirable that businesses participate in the project as participating or cooperating institutions. (While the participation or cooperation of businesses is not essential upon submitting a proposal, it is desirable to invite them in the process of implementing the project.) The reasons why it is desirable to consider the participation or cooperation of businesses include the following: The addition of the perspectives of corporate researchers or business people is useful for developing a network among academic institutions and cooperation at the center; and understanding of local needs and the current state of network development can bring beneficial outcomes to participating businesses.

If the proposed project is selected, it is required to immediately conclude agreement documents, such as a memorandum of cooperation (MOC) and a collaborative research agreement (CRA), between Japanese and African universities or other research institutions. An agreement between the representative institution and the foreign representative institution is essential. The research can be started before signing these documents on the assumption that the agreement has been concluded.



2. Application submission period

- 9:00 am, Friday, July 3, 2015 to 3:00 pm, Friday, July 31, 2015
- For the schedule from application submission to launch of the project, please see “IV. 1. Schedule from Application Submission to Project Launch.”
- Use the Cross-ministerial R&D Management System (e-Rad) for the application (submission of Research and Development Proposal). For how to file an application, please see “VII. Application using the Cross-ministerial R&D Management System (e-Rad).”
- As the deadline for applications approaches, the load on the e-Rad system is expected to increase and it may take longer to file an application or it may not be possible to complete an application. To avoid these and other system-related troubles, please complete an application sufficiently before the deadline.

3. Requirements for application

(1) Eligible institutions

Universities, inter-university research institutes, technical colleges, national and public experimental research institutions, independent administrative corporations, national research and development agencies, and juridical organizations such as private companies in Japan are eligible.

After starting the project, if it is determined that cooperation with a project conducted by another domestic or foreign institution would likely generate synergistic effects, it is allowed to add the institution as a cooperating institution.

(2) Requirements for applicants

The application must be filed by the R&D representative. The R&D representative must belong to a university or other research institution in Japan and intend to continue cooperating with the center after the completion of the support provided by this program and have the ability to coordinate efforts to set up the center together with research institutes in Japan and the cooperating country to form the center and international organizations.

One R&D representative is allowed to file only one proposal.

(3) Program period

The period is, in principle, five years.

An interim evaluation is conducted in the third year of the project. Modifications, including change of the plan and discontinuation of the project, may be made according to the result of the interim evaluation.

(4) Research and development expenses

(i) With regard to expenses necessary to conduct the project, a research and development outsourcing contract must be concluded between AMED and Japanese institutions (including the representative institution). Items of expenses allowed to be used are direct expenses (including 1) expenses for goods, 2) travel expenses, 3) personnel expenses and rewards, and 4) others) and indirect expenses.

(ii) The expenses per project must not exceed, in principle, 75 million yen (including indirect expenses) annually. Note that the allowable amount may be reduced in the subsequent years depending on the budget allocated to the program, which is affected by the financial situation of the national government.

(5) Number of projects to be selected (subject to change)

Approximately 3 projects

4. Screening method

(1) Screening to select projects (pre-evaluation) is performed by the Project Evaluation Committee consisting of external experts, which is established according to the decision of AMED, using a two-step method, comprising an application document screening based on submitted documents and an interview screening with the R&D representative. Based on the screening results, AMED will select projects for the program.

(2) In the process of selection, the applicant may be asked to modify the plan for the project based on the opinions

of the Project Evaluation Committee or for other reasons.

(3) Institutions that have submitted a proposal and been selected for the interview stage will be notified of the time and place for the interview to the contact address provided on the submitted document.

(4) The final selection result will be notified to the applicant's contact address after screening. The result will also be posted on the website and other public sites.

5. Screening criteria (pre-evaluation items)

The screening criteria are basically as follows. Project Evaluation Committee will discuss the details and It will be announced the public by AMED at adoption:

- 1) Consistency with the objective of the program
- 2) Appropriateness of the plan
- 3) Technological significance and superiority
- 4) Implementation structure
- 5) Required expenses
- 6) Other items specified by the project

6. Others

The number of projects selected and the expenses for research and development may be increased or decreased according to the contents of the proposal and the budget allocated to the program, which is affected by the financial situation of the national government.

IV. How to complete and submit the Research and Development Proposal

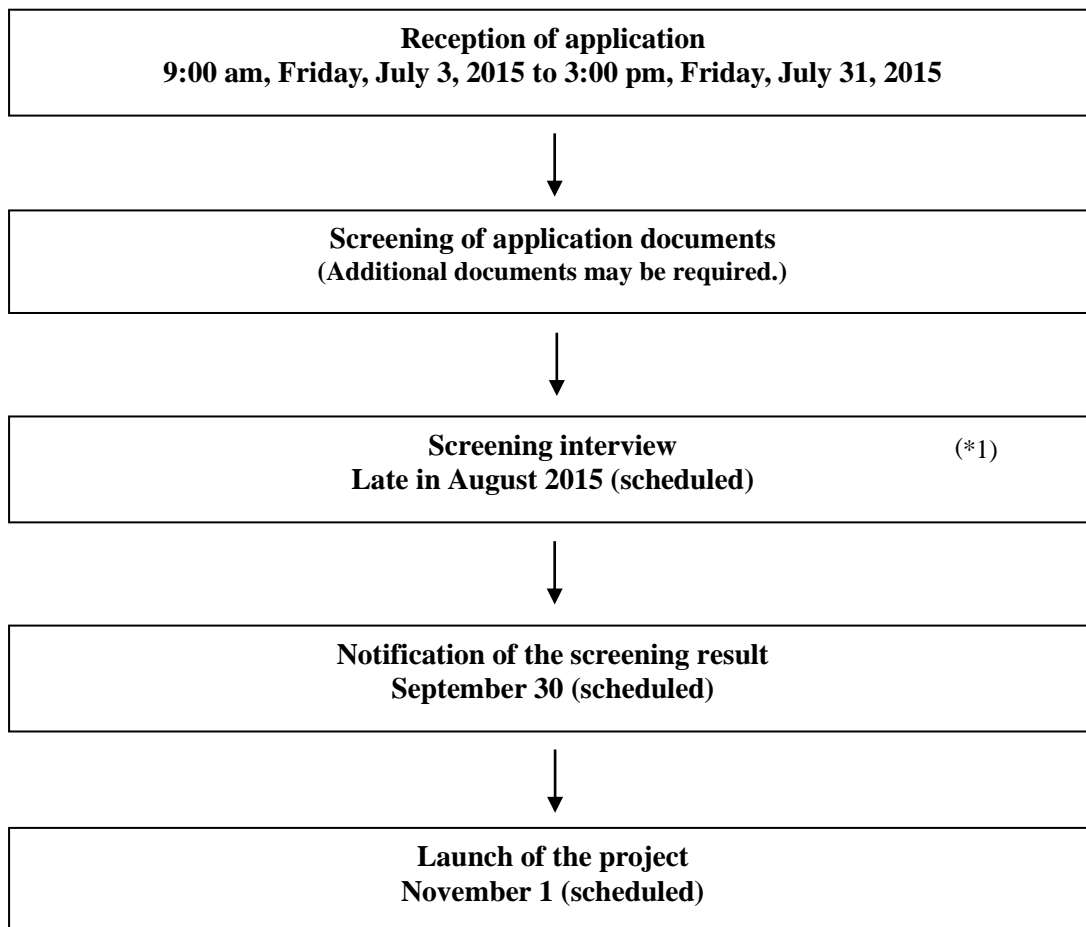
The Research and Development Proposal will only be used for selecting projects for this program from the perspectives of maintaining the benefit for the applicant and the Act on the Protection of Personal Information Held by Independent Administrative Agencies, etc., and other relevant perspectives. All information provided on the application will be kept strictly confidential. For details, please visit:

<http://law.e-gov.go.jp/htmldata/H15/H15HO059.html>

The Research and Development Proposal that will be adopted may be used by AMED for promoting research and development after its adoption.

1. Schedule from Application Submission to Project Launch

The following is an outline of the schedule from application submission to project launch:



*1: The time for the screening interview will be notified to the R&D representative and the staff in charge of communication. Please note that this notification may be provided immediately before the screening interview. We may also contact the applicant to request them to prepare information that should be provided at the interview.

2. Preparation of forms for a research and development proposal

Form 1	Research and Development Proposal
Form 2	Basic Concept
Form 3	Description of Research and Development
Form 4	Organizational Chart
Form 5	Expenses
Form 7	List of Papers and Books
Form 8	List of Patents
Form 11	Letter of Intent (LOI) of the Research Institute in the Partner Country

- Use Japanese in all forms except Form 11. (Some parts are required to be written in both English and Japanese.) Use English for Form 11.

5. Examples of How to Complete the Research and Development Proposal Forms

(Form 1)

Research and Development Proposal for the FY2015 International Joint Research Program to
Address Neglected Tropical Diseases (NTDs) in Africa

Title of Research and Development	Japanese: English:
Name of the representative of the research and development proposal	Japanese: English:
Department and job title at the affiliated institution	Japanese: English:
Contact information	Address: E-mail: TEL: FAX:
Researcher No.	<i>Enter the 8-digit Researcher No. provided when the researcher submitted information on himself/herself for registration on the Cross-ministerial R&D Management System (e-Rad).</i>
Date of birth	___ (date) ___ (month), ____ (year)
Educational background (Start with the university you graduated from)	(Example) ___ (year): Graduated from ___ Faculty, ___ University ___ (year): Completed ___ Master's Program majoring in ____, ___ University Graduate School of ____ (Supervising Professor: Prof. ____) [Mandatory] ___ (year): Completed ___ Doctoral Program majoring in ____, ___ University Graduate School of ____ (Supervising Professor: Prof. ____) [Mandatory] ___ (year): Obtained Doctor's Degree (in ____) (____ University) <i>The name of the supervising professor and the name of the head of the laboratory you belong to must be provided.</i>

<p>Research accomplishments (Major professional experiences and details of research and development activities)</p>	<p>(Example)</p> <p>___ (year): Research Associate, ___ Faculty, ___ University Conducted research on _____ at the laboratory of Prof. ___</p> <p>From ___ (year) to ___ (year): Researchers, ___ Research Institute Engaged in research on ___ at the laboratory of Dr. ___</p> <p>From ___ (year) to ___ (year): Professor, ___ Faculty, ___ University Conducted research on _____</p> <p><i>The name of the supervising professor and the name of the head of the laboratory you belong to must be provided.</i></p>		
<p>Research and development period</p>	<p>From ___ (month) 2015 to __ (month) ___ (year)</p>		
<p>Research and development expenses necessary for the proposed project (yen)</p>	<p>FY</p>	<p>Total expenses for research and development <i>Provide here the "total expenses for research and development" for each fiscal year in the [Overall Table].</i></p>	<p>Direct expenses (which is included in the total expenses) <i>Provide here the total of the "subtotals of direct expenses" of each institution in the [Breakdown Table].</i></p>
<p>2015</p>	<p>¥XX,XXX,XXX</p>	<p>¥XX,XXX,XXX</p>	<p>¥XX,XXX,XXX</p>
<p>2016</p>	<p>¥XX,XXX,XXX</p>	<p>¥XX,XXX,XXX</p>	<p>¥XX,XXX,XXX</p>
<p>2017</p>	<p>¥XX,XXX,XXX</p>	<p>¥XX,XXX,XXX</p>	<p>¥XX,XXX,XXX</p>
<p>2018</p>	<p>¥XX,XXX,XXX</p>	<p>¥XX,XXX,XXX</p>	<p>¥XX,XXX,XXX</p>
<p>2019</p>	<p>¥XX,XXX,XXX</p>	<p>¥XX,XXX,XXX</p>	<p>¥XX,XXX,XXX</p>
<p>Objective of research and development</p>	<p>Japanese</p> <ul style="list-style-type: none"> • Copy and paste the information described in the "Research Objective" section in the "Application Information" on e-Rad. • Summarize in 1000 characters or less (including line-feed characters and spaces) <p>English</p>		
<p>Summary of research and development</p>	<p>Japanese</p> <ul style="list-style-type: none"> • Copy and paste the information described in the "Research Objective" section in the "Application Information" on e-Rad. • Summarize in 1000 characters or less (including line-feed characters and spaces) 		

	English			
Implementation structure (List of participants)	Name	Affiliation/Job title	Tasks which the person will be in charge of in this proposed project	Effort (%)
		<p><i>List the participants in this proposed project in the order from the R&D representative to R&D participants (including researchers who belong to foreign participating institutions).</i></p> <p><i>If there are more than 10 participants, add additional boxes as necessary.</i></p>		
Administrative staff member of the institution to which the R&D representative belongs	Address: Institution's name: Job title, Name: E-mail: TEL: FAX:			

Data on foreign participating institutions (not more than 2 pages of A4)

(If there is more than one foreign participating institution, provide data for all of them.)

(If an institution serves as the center, state so in the “Others” section.)

(1) General information

Country	Japanese: English:
Official name of the institution	Japanese: English:
Name of the representative	Japanese: English:
E-mail address of the representative	
Major activities	Japanese: English:
Others (URL, etc.)	

(2) Major research achievements

Provide a brief outline of the major cooperative achievements between foreign participating institutions and the representative institution. If there is a foreign institution that serves as an overseas center for a Japanese institution, provide a brief outline of the major cooperative achievements between the center and institutions in the partner country. It is not necessary to provide a list of published papers. Instead, provide a brief description of efforts in the past, including achievements related to the theme of the cooperation proposed this time, in such a way as to show that significant achievements are expected through international cooperation.

(3) Preparations made so far to establish the center for cooperation

*Describe the level of preparations made so far to establish the center for cooperation in conducting the proposed international joint research. **Form 11 (the Letter of Intent or a more detailed agreement) of a foreign participating institution must be attached.***

(Form 2) 4 pages or less

1. Concept

- Describe in such a way that evaluators can easily understand. Use figures and tables, if necessary.
- Use no more than four A4 pages.

(1) Targets and objectives of research and development

Provide specific descriptions of (1) targets of research and development (target results of the research and development upon completion of the research and development period) and (2) objectives of research and development (outcomes arising from the results above).

(2) Background of research and development

Describe the priority, social, economic and industrial needs of the partner country/region to clarify the importance and necessity of the proposed research and development. Include, if necessary, trends of the field concerned and relevant fields.

(3) Summary of research and development

Provide a specific summary of the research and development.

(4) Expected development of results

Provide specific descriptions of the following within the possible range: Start with targets and objectives of the research and development, and also the creation of science and technology innovation, the creation of new industries/social contributions, and the acquisition and use of intellectual properties, which are expected to be realized.

(5) Results and achievements in the past

(1) Research and development

Describe results and achievements for at least the last five years related to this proposed research and development.

Name of the project (program):

Period:

Outcome/achievement:

Name of the project (program):

Period:

Outcome/achievement:

(2) Development of human resources

Name	Outcome/achievement:
------	----------------------

○○○ ○○○○ <i>Experts who have been trained and educated</i>	○○○○ <i>Describe the results of human resource development efforts for at least the last five years, including a list of scientific papers and achievements.</i>

(6) Appropriateness of the institution serving as the center

Provide reasons for the appropriateness of the institution concerned serving as a center for cooperation, in terms of, for example, the research environment and the management system of the institution, the position of the institution in the partner country/region, the superiority of the cooperative theme within the African region, and benefits to Japan from the institution when it serves as a center.

(7) Preparations made so far

Describe how the institution, if selected, is prepared to enable itself to smoothly start the full-scale research in the field concerned with foreign participating institutions in the country concerned.

(8) Annual targets

Briefly describe the following:

- (1) Target for the first year
- (2) Interim target for the third year from the launch of research and development
- (3) Target upon completion of the project period

(9) Post-project efforts

Describe as much as possible on how to continue cooperative efforts at the center after completing the support period of this program, how to develop research results so as to make them useful to society, and the prospects for these efforts.

(Form 3) 2 pages or less

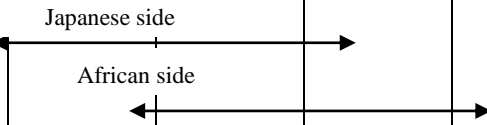
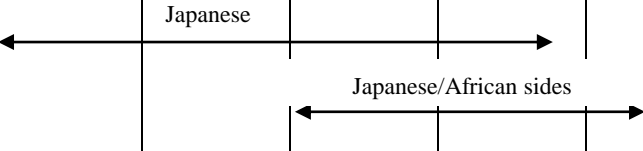
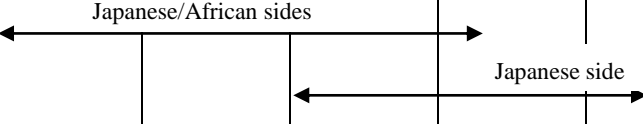
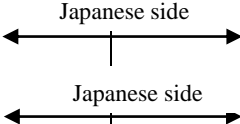
2. Description of Research and Development

(1) Summary of joint research

Summarize the research, including a clear detailed description of how to allocate responsibilities between research institutions in Japan and those in Africa in conducting the joint research. Add the details of the contribution that can be expected from African research institutions. Foreign participating institutions are required to have the capabilities necessary for joint research with Japan, such as contributing by providing any of the following research resources: research expenses, human resources, fields, samples and facilities; and are also required to bear an appropriate share of the costs of participating in the project. Refer to “II. 1. Projects eligible for the program [Implementation structure].”

(2) Major schedules for research and development

- Provide the schedule and the name of the person in charge for each item.
- The table for the major schedules must not exceed one page.

Research and development items	Name of the person in charge	FY2015	FY2016	FY2017	FY2018	FY2019
1. ___-related gene expression profiling • ___ gene identification • ___ gene expression profiling						
2. • Development and validation of animal models of ___ • Development of animal models of ___ • Validation of animal models of ___						
3. ___ imaging analysis • Acquisition of ___-related data • ___ software development • Data analysis						
4. Development of diagnostic methods for ___ • Elucidation of the mechanism underlying the correlation of ___ • Development and validation of diagnostic methods						

(Form 4) 1 page or less

3. Organizational Chart

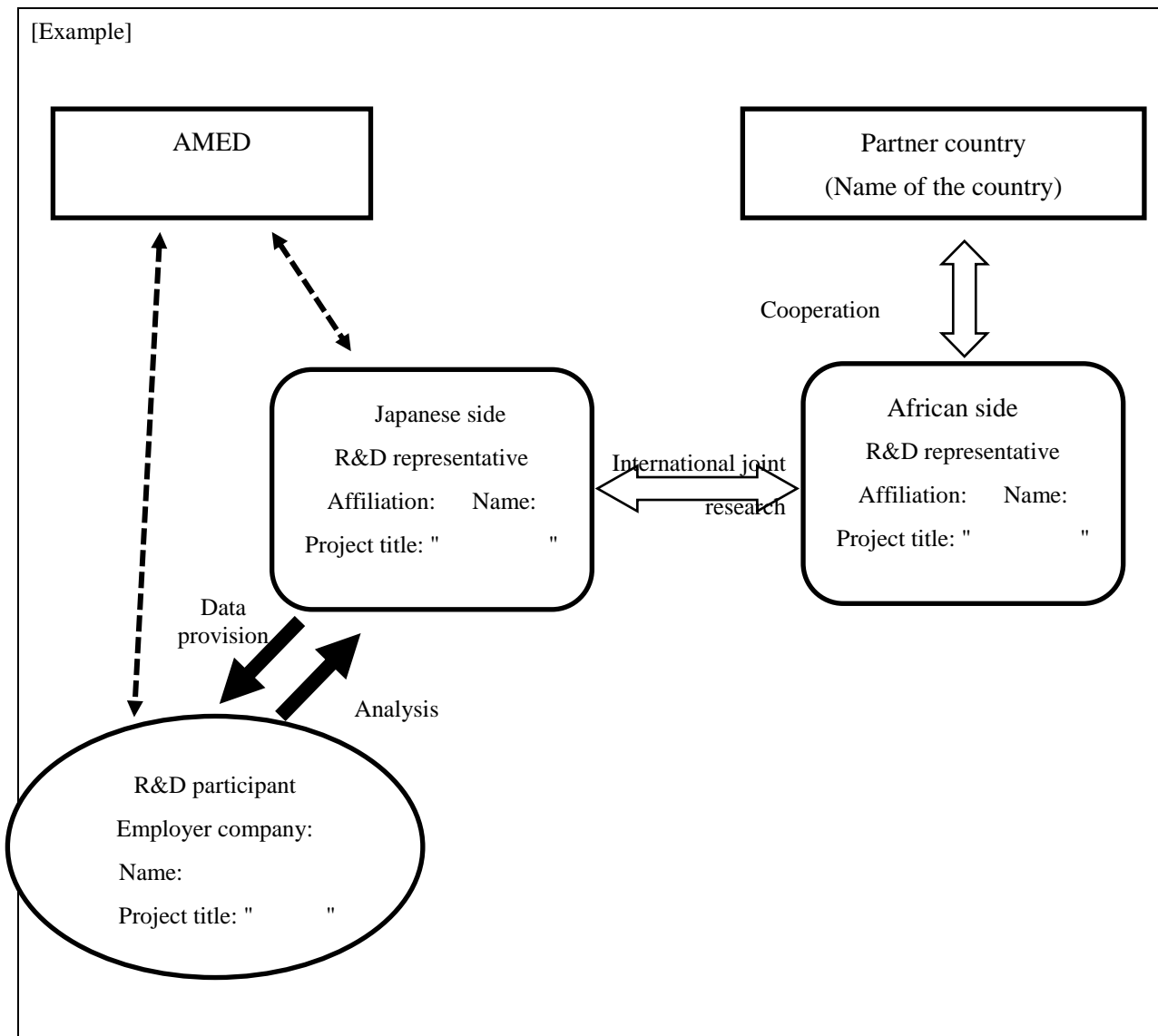
• Include the research and development system and the contract partner in the organizational chart. Refer to the example below for how to create a chart.

Rounded square: Universities, etc.; Oval: Companies; Square: AMED; Dotted arrow: Flow of contract

Double-line arrow: Exchange of samples, information, etc. and allocated responsibilities (Describe the details.)

• The chart must not exceed one page.

• If there are cooperating institutions, please clearly indicate so.



(Form 5)

4. Expenses

Overall Table (Total of Japanese participating institutions)

• The total amount for each fiscal year in this table must match the “total expenses for research and development” for each fiscal year in Form 1 “Research and development expenses necessary for the proposed project (yen).”

• At this stage of the proposal, you do not have to take into account a subcontracting agreement.

(Unit: yen)

Major items		FY2015	FY2016	FY2017	FY2018	FY2019
expenses Direct	Expenses for goods					
	Travel expenses					
	Personnel expenses and rewards					
	Others					
Subtotal of direct expenses						
Indirect expenses (30% of direct expenses)						
Total						

Representative institution (Japanese participating institution): Name of the institution

(Unit: yen)

Major items		FY2015	FY2016	FY2017	FY2018	FY2019
expenses Direct	Expenses for goods					
	Travel expenses					
	Personnel expenses and rewards					
	Others					
Subtotal of direct expenses						
Indirect expenses (30% of direct expenses)						

Total					
-------	--	--	--	--	--

Non-representative institution (Japanese participating institution): Name of the institution

(Unit: yen)

Major items		FY2015	FY2016	FY2017	FY2018	FY2019
Direct expenses	Expenses for goods					
	Travel expenses					
	Personnel expenses and rewards					
	Others					
Subtotal of direct expenses						
Indirect expenses (30% of direct expenses)						
Total						

• If there are more than two non-representative institutions, add tables as needed.

Reference: Japanese participating institution: Name of the institution

(Unit: yen)

	FY2015	FY2016	FY2017	FY2018	FY2019
Total					

• State the shared amount of any of the following research resources to be borne by a foreign participating institution in this project: research expenses, human resources, fields, samples, and facilities.

**Not the money commissioned by AMED but the funds prepared by the African side.*

(Form 7)

. List of Papers and Books

List up to five major policy proposals (contributed guidelines, etc.), papers published in scientific journals, and books related to this proposed project (in the last three years), for the R&D representative and each of the R&D participants, in the order of the most recent to the least recent. Mark a circle ○ in front of the name of the author of a paper or book directly related to this proposal.

R&D representative (Japanese side)

State the author (all the authors), the title of a published paper, journals carrying the paper, issue number, pages (the first and the last), and the year published.

Provide the following information for up to two members for each research institution:

R&D participants (Japanese side)

State the author (all the authors), the title of a published paper, journals carrying the paper, issue number, pages (the first and the last), and the year published.

R&D representative (African side)

State the author (all the authors), the title of a published paper, journals carrying the paper, issue number, pages (the first and the last), and the year published.

(Form 8)

7. List of Patents

Provide information for up to five intellectual property rights acquired, including patent rights, and/or applications filed for these rights, which will play an important role in achieving the goals of this proposal.

Application number, inventor, name of the invention, applicant, application date

(Form 11)

10. Letter of Intent of the Research Institute in the Partner Nation

If the project is selected under this program, it will be necessary to confirm the intention of universities and other institutions in Africa to conduct international joint research. For this confirmation, please attach a letter of intent (LOI) addressed to AMED from the head of an organization that has the authority to promote the proposed international joint research at universities and other institutions in Africa. The LOI must include the research and development title of this proposal, the name of the research representative on the African side, the objective of the project, and roles and responsibilities of the institution in Africa. (in any format)

**Important notes regarding e-Rad: Only one Word or PDF file can be uploaded on e-Rad. An LOI must be converted into a PDF file. Separately, application forms (Forms 1 to 10) must also be converted into a PDF file. Combine these PDF files into one PDF file using PDF editing software and upload it to e-Rad.*

VIII. Q&A

(2) Requirements for applications, etc.

Q: What relationships with universities or other research institutions in Africa are required to apply for the program? Do we have to be currently engaged in joint research with them to apply for the program?

A: There are various forms of cooperation between research institutions and it is difficult to give a clear definition. However, reserve funds are flexible budgets. It is necessary to be ready to start research immediately under the assistance of the institution when your application is approved. It should be obviously stated in the letter of intent (LOI) with counterpart institute.

Q: Do we have to acquire funds necessary for research in this project at the African side?

A: As this is joint research, the African side is also expected to bear an appropriate share of costs. Ideally, you should be able to acquire funds for research. It is also acceptable if the African side can provide or source things for this project, such as fields, samples, research spaces, researchers, research supporters and healthcare professionals which are deemed appropriate. In this case, clearly state so in your proposal form.

Q: Do we have to select only one African country?

A: The objective of the program is to conduct international joint research not between different countries but between institutions. Therefore, for example, it is possible to conduct joint research between University X in African country A and University Y in African country B, if both meet the requirements for conducting joint research.

Q: Can universities and other research institutions not in Japan or Africa participate in the program?

A: This program is targeted at joint research between universities and other research institutions in Japan and those in Africa. It is possible for universities and other research institutions in countries other than Japan and Africa to participate on the basis that a university or research institution in Africa serves as a foreign representative institution, depending on the necessity, appropriateness and/or the role it plays. It should be explained in the proposal(s)..

(4) Research contracts

Q: Is it allowed to allocate research funds to universities and other research institutions in the partner country?

A: In this program, AMED commissions research and development to universities and other research institutions in Japan, but not to those in African countries. It is not allowed for universities and other research institutions in Japan to use money commissioned by AMED for the payment of contracting and subcontracting expenses, joint research expenses, or outsourcing costs.