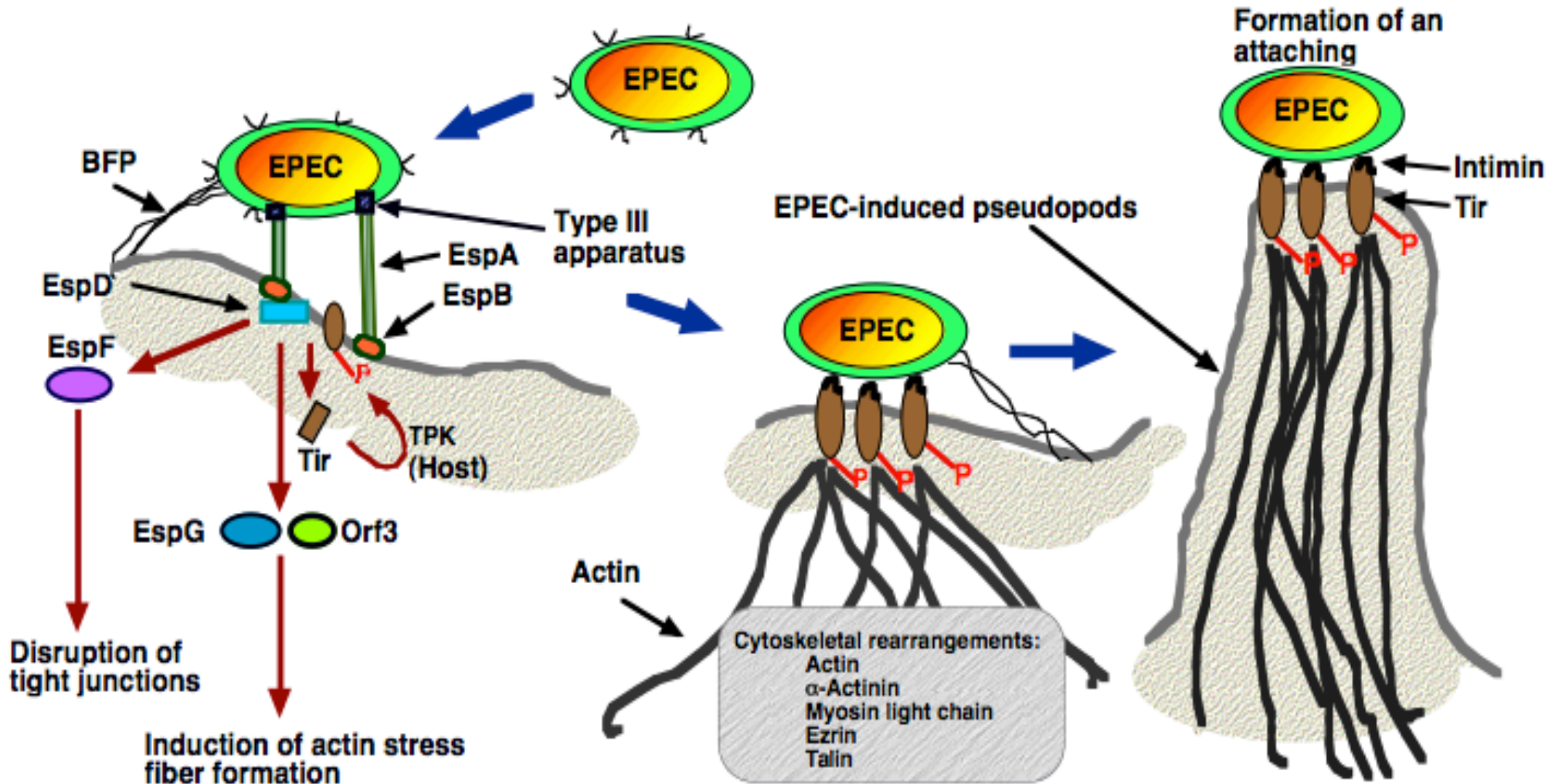


A model of Enteropathogenic *Escherichia coli* (EPEC) interaction with epithelial cells



Rosenshine, I. et al., *EMBO J.* **15**, 2613 (1996)
Kenny, B. et al., *Cell* **91**, 511 (1997)
Knutton, S. et al., *EMBO J.* **17**, 2166 (1998)
Matsuzawa, T. et al., *EMBO J.* **23**, 3570 (2004)