

CHARACTERISTICS OF A TRANSLATIONAL SCIENTIST

Translation is the process of turning observations in the laboratory, clinic and community into interventions that improve the health of individuals and the public – from diagnostics and therapeutics to medical procedures and behavioral changes. The professionals involved in this process, either developing interventions or improving the process itself, are *TRANSLATIONAL SCIENTISTS*.

RIGOROUS RESEARCHER

Conducts research at the highest levels of rigor and transparency, possesses strong statistical analysis skills, and designs research projects to maximize reproducibility.

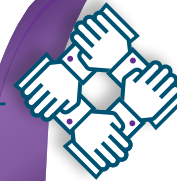


BOUNDARY CROSSER

Breaks down disciplinary silos and collaborates with others across research areas and professions to collectively advance the development of a medical intervention.

TEAM PLAYER

Practices a team science approach by leveraging the strengths and expertise and valuing the contributions of all players on the translational science team.



PROCESS INNOVATOR

Seeks to better understand the scientific and operational principles underlying the translational process, and innovates to overcome bottlenecks and accelerate that process.



DOMAIN EXPERT

Possesses deep disciplinary knowledge and expertise within one or more of the domains of the translational science spectrum ranging from basic to clinical to public health research and domains in between.



SKILLED COMMUNICATOR

Communicates with understanding with all stakeholders in the translational process across diverse social, cultural, economic and scientific backgrounds, including patients and community members.



SYSTEMS THINKER

Evaluates the complex external forces, interactions and relationships impacting the development of medical interventions, including patient needs and preferences, regulatory requirements, current standards of care, and market and business demands.

