

R&D Overview

<https://www.shiga-med.ac.jp/en>

<http://www.shiga-med.ac.jp/~hqpatho2/index-e.html>

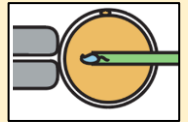


Prof. Yasushi ITOH

Support

1. Breeding and supply of cynomolgus macaques for vaccine evaluation

- Nonhuman primate models are important for prediction of the efficacy of vaccine and drug candidates before clinical trials.
- We breed cynomolgus macaques using artificial breeding technology.
- We supply cynomolgus macaques to flagship and synergy institutions.



2. Collaboration of ABSL3 and ABSL2 studies with flagship and synergy institutions

- We collaborate vaccine studies using viruses with flagship and synergy institutions.

Advance

3. Establishment of cynomolgus macaque models with medical complications

- Vaccination is helpful to prevent persons with medical complications from severe diseases and hospitalization.
- We develop and provide disease models of cynomolgus macaques for vaccine studies.

4. Artificial breeding of cynomolgus macaques using cynomolgus FSH and CG

- To improve breeding efficacy, we develop cynomolgus FSH and CG hormones.
- On demand of other institutes, we will supply cynomolgus FSH and CG.

